



Outdoor Detection Systems

Explosion Proof

Microwave Intruder Detector

# PIRAMID EX SERIES

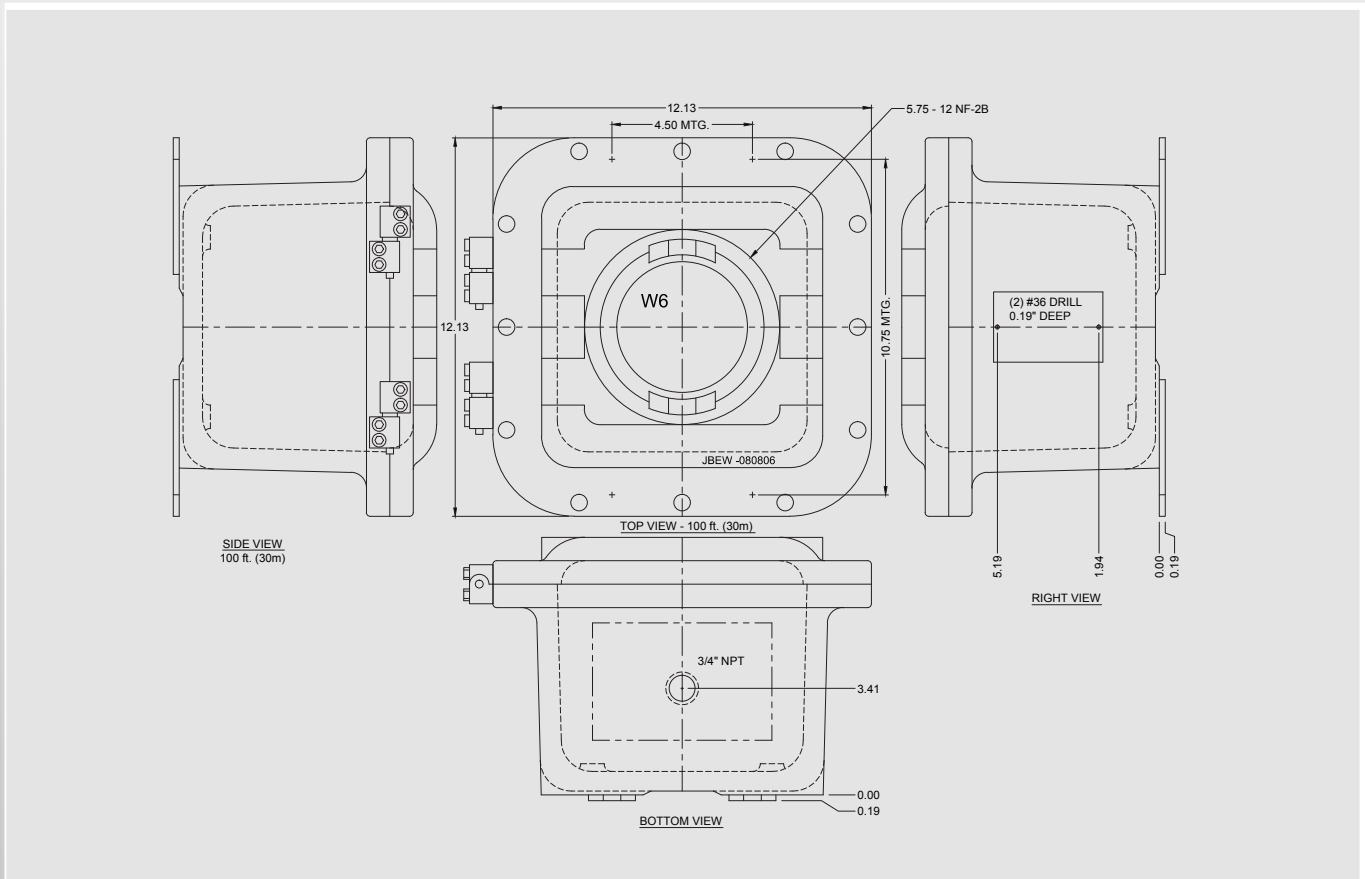


Made in the U.S.A.

microwave  
technology



## EX ENCLOSURE DIAGRAM



The EX Enclosure has been manufactured to the following standards.

**UL 50** - Enclosures for Electrical Equipment

**UL1203** - Explosion-Proof and Dust-Ignition-Proof Electrical Equipment for Use in Hazardous Locations (Classified) Locations

**CBA Std. C22.2 No. 25-1968** – Enclosures for Use in Class III, Groups E, F and G Hazardous Locations

**CAB Std. C-22.2 No. 30-M1986** – Explosion-Proof Enclosures for Use in Class I Hazardous Locations

**CAN/C-BA-C22.2 No. B4-M31** – Special Purpose Enclosures

The above reference enclosure is UL Classified and C-SA Certified, Tag #52 for:  
Class I, Division 1 & 2, Groups B, C, and D  
Class II, Division 1 & 2, Groups E, F and G  
Class III  
Class I, Zone 1, Group IB+H2

# PIRAMID EX SERIES

**GENERAL INFORMATION:** The **SDI-77XL2-EX** Model of Stereo Doppler was developed to protect Hazardous Locations due to the presence of flammable gasses or vapors, combustible dusts or easily ignitable fibers or flyings. The SDI-77XL2-EX electronic assembly is configured to be easily inserted into special explosion-proof enclosures. This unit is suitable for applications in hazardous locations under NEC Standards.

## STEREO DOPPLER MICROWAVE

**DETECTOR** – Two receiving channels with the ability to eliminate vibration and periodically moving objects as sources of false alarms.

## MICROPROCESSOR CONTROLLED

– Proprietary integrated circuit design that provides enhanced digital signal processing for microwave sensor.

## STEREO DOPPLER SUPERVISION

– A component or power failure will cause the sensor to lock-in alarm.

## DIGITAL RANGE CONTROL

– Ten-position digital switch adjusts the overall size of the sensor's detection area (to its maximum range).

## DIGITAL SENSITIVITY CONTROL

– Ten-position digital switch adjusts the amount of movement required to initiate an alarm condition.

## ENHANCED BIRD/ANIMAL IMMUNITY CONTROL

– Two-position switch adjusts the sensor's immunity to birds and small animals.

## ANALYTIC LED'S

– Red Alarm LED, Green ECI (Environmental Caution Indicator) LED with internal disable switch.

## TAMPER PROOF

– Housing tamper with terminal connection.

## ALL SOLID STATE RELAY

– User selectable form C relay output. A Solid State relay is flexible, silent and more reliable than an electromechanical relay.

## WALK-TEST SOUNDER

– Optional audible tester to assist in the walk-test and initial sensor set-up. The **XL-Mini Sounder** greatly simplifies the installation as it enables walk-testing and adjustment by a single installer.

The unit is suitable for installations at petroleum refineries, chemical and petrochemical plants, storage areas and other processing facilities where hazardous substances are handled or stored.

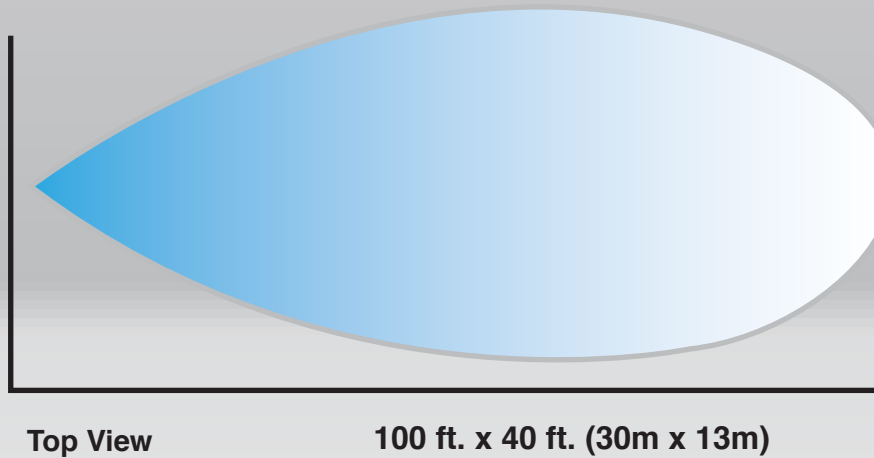
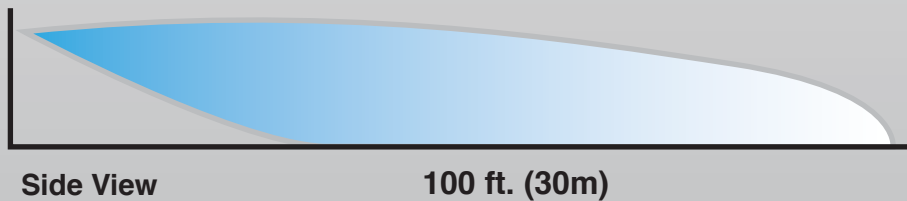
## ORDER INFORMATION

SDI-77XL2-EX 100 ft. x 40 ft. (30m x 13m)

## Explosion Proof Specifications

<b>Input Voltage</b>	<b>8.5 to 20 Vdc</b>
<b>Current Consumption</b>	<b>150 mA@12 Vdc (LED's off)</b>
<b>RF Power Density</b>	<b>120 uW/cm2 max. at the face of the unit</b>
<b>Weight</b>	<b>40 lbs.</b>
<b>Operating Temperature:</b>	<b>-40° F to 150° F (-44°C to -65° C)</b>
<b>Operating Humidity</b>	<b>0 to 100% Relative Humidity</b>
<b>Relay Contact Rating</b>	<b>0.1A, 50V</b>
<b>Microwave Frequency:</b>	<b>Factory adjusted to one of the following frequencies:</b>
	<b>10,525 MHz      USA</b>
	<b>10,587 MHz      International</b>
	<b>9,900 MHz      International</b>
	<b>9,470 MHz      International</b>
<b>Electrical Access:</b>	<b>Housing provided with 1/2" pipe thread. Special hole size, location and thread available upon request.</b>

### EX Protection Pattern



Seal of the retailer

In order to continuously ensure the high standard of quality and performance of our products, we reserve the right to modify the present technical data without notification.

